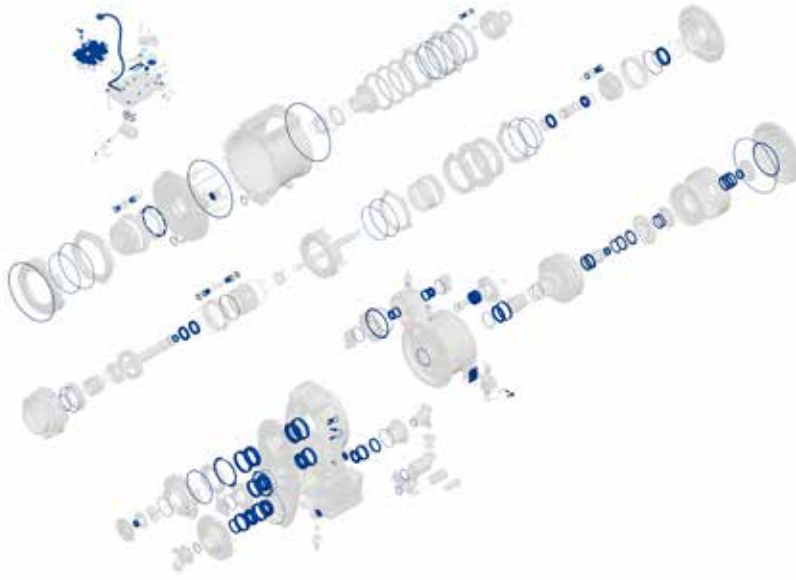


980H/K Transmission Repair Options



Level 1 Rebearing/Reseal

- >> Provides new component life
(if other parts meet reusability guidelines)
- >> Guaranteed price
- >> Reduces costs
- >> Reduces downtime

PLANNED/PROBLEM INDICATORS

- Component hours
- Transmission oil leak
- S•O•SSM Report
- Failure of another component within the same oil system
- Machine down for other work

INCLUDES PART OR SERVICE

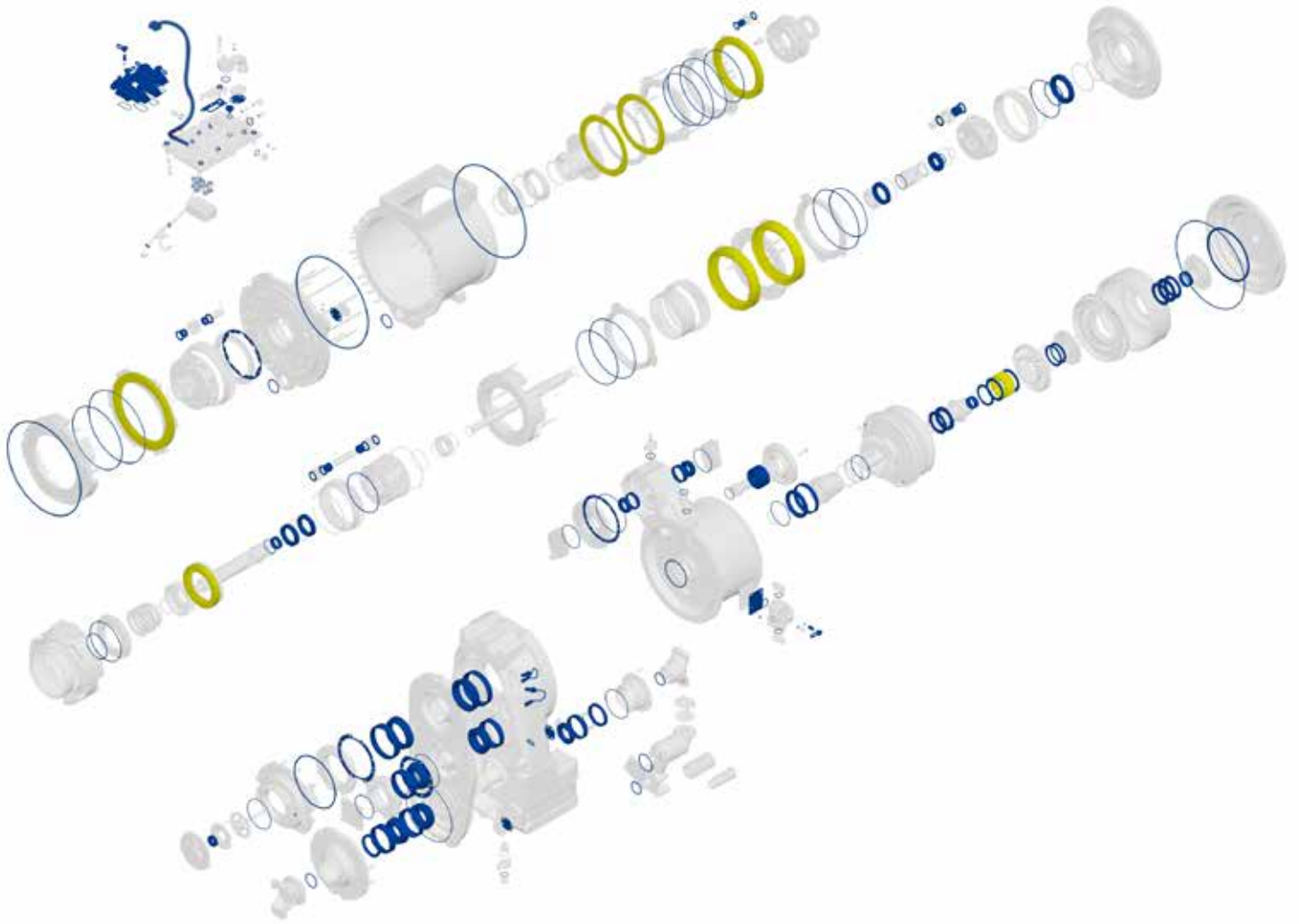
- All bushings and anti-friction bearings
- All seals and gaskets
- All thrust washers
- All solenoid valves
- Speed sensor
- Transmission wiring harness

INSPECT

- Clutch discs and plates
- Gears
- Shafts
- Clutch pistons
- Countershaft assemblies
- Operation test on transmission test bench

LEVEL 2

Clutch discs
Clutch plates



- Level 1
- Level 2