

RENTAL SOLUTIONS



Rent it here.

Warren CAT. **Your FIRST Choice.**



www.warrencat.com

THE RIGHT SOLUTION. RIGHT NOW.



WHY RENT WITH WARREN CAT?

EQUIPMENT | Our fleet is loaded with the newest, most reliable equipment in the industry. The fleet is rigorously maintained by trained Service Technicians prior to every rental so you receive productive and reliable equipment.

PEOPLE | Warren CAT employees are among the most experienced and knowledgeable in the industry. Have a question? We can answer it. Have a special request? Not a problem. With Warren CAT, you'll get more than great equipment; you'll get great advice and assistance.

FACILITIES | With full service locations across Oklahoma and Texas, we can provide fast, quality service with specially trained Cat® and allied product service technicians...your place or ours.

CAPABILITIES | Any piece of equipment, big or small, Warren is ready and waiting for you. We have you covered – regardless of your rental needs. Our large inventory and nationwide network means timesaving delivery of the equipment you need.

RENT, RENT-TO-OWN, LEASE, FINANCE, PURCHASE | You can choose from a huge selection of well-maintained, top quality new and used name-brand equipment...with low hours and competitive prices...and we can put together a deal that works for you.

COMMITMENT | Some places claim to be the biggest, but when you consider all that Warren CAT has to offer...

- Locally owned and operated
- Legendary Caterpillar name and product support
- Best maintained fleet
- Largest dedicated inventory in Texas and Oklahoma
- On call 24/7

...plus, a sincere interest in your success, your bottom-line...you'll realize that we are the undisputed leader in rental services.

EARTH MOVING MACHINES & ATTACHMENTS

HYDRAULIC EXCAVATORS



MODEL	POWER (HP)	OPERATING WEIGHT (LBS)	MAX REACH/DEPTH (FT)
301.7	18	3,703	12.9 / 7.8
302.7	24.9	6,052	16.2 / 9.8
303	30	7,575	18.1 / 10.1
304	42	10,582	19.11 / 12.4
305	47	11,465	20.7 / 12.11
308	54	17,730	22.3 / 15.5
312	90	18,350	28.4 / 19.1
314	90	32,190	28.4 / 19.6
316	113	38,801	30.5 / 21.7
318	113	41,010	30.5 / 21.7
319	125	44,225	30.6 / 20.5
320	148	44,820	35.2 / 25.1
321	148	51,875	35.4 / 25.2
324	188	54,660	34.4 / 23.8
328	202	87,850	34.8 / 22.8
329	232	68,958	33.6 / 23.9
329 LR	240	68,958	36.7 / 25.8
336	316	86,796	38.5 / 26.1
349	425	117,500	39.9 / 26.1
M322	165	46,518	33.86 / 21.92

TRACK LOADERS



MODEL	POWER (HP)	OPERATING WEIGHT (LBS)	BUCKET CAPACITY (YD ³)
953	148	34,381	1.5
963	189	45,128.5	2.42

TRACK-TYPE TRACTORS



MODEL	POWER (HP)	OPERATING WEIGHT (LBS)
D3K	74	16,227
D4K	84	17,317
D5K	96	19,662
D6K	125	28,409
D6K SB	150	36,497
D6N	150	36,497
D6N LGP SB	150	39,112
D6N VPAT	150	39,112
D6T	185	46,690
D6T XL VPAT	200	44,270
D6T XW VPAT	207	53,170
D7E	235	56,669
D8	312	86,900

MOTOR GRADERS



MODEL	POWER (HP)	OPERATING WEIGHT (LBS)	BLADE WIDTH (FT)
12M2	173	44,349	14
120M2 AWD	153	41,859	14
140	183	33,356	14
140 H ARO	185	45,652	14
140M AWD	213	43,834	14
160M	228	47,249	14

SCRAPERS



MODEL	POWER (HP)	CAPACITY (YD ³)	OPERATING WEIGHT - EMPTY (LBS)	TRAVEL SPEED (MPH)
613	175	11	33,650	21.8
615C	265	17	56,450	27.6
623	330	23	82,530	32

ARTICULATED TRUCKS



MODEL	POWER (HP)	RATED PAYLOAD (TONS)	OPERATING WEIGHT - EMPTY (LBS)
725	301	26	49,075
730	317	31	50,376
740	753	43.5	72,973
745	504	45.2	73,634

BACKHOE LOADERS



MODEL	POWER (HP)	OPERATING WEIGHT (LBS)	DIG DEPTH (FT)
416 CE4	88	14,160	17.11
416 AE4	88	14,16	17.11
420 CE4	93	15,201	17.11
420 AE4	93	15,201	17.11
420 AE4 IT	93	15,201	17.11
430 AE4 IT	102	16,066	19.5

BACKHOE LOADER WORK TOOLS

DESCRIPTION
FORK ATTACHMENT
HYDRAULIC HAMMERS (1,000 to 2,000 ft/lbs)
COMPACTION WHEELS

HYDRAULIC EXCAVATOR WORK TOOLS



DESCRIPTION
AUGERS (301.8 thru 305 CR models only), (6" to 30")
GRUBBERS
HAMMERS (500 to 7,500 ft/lbs)
THUMBS
TRENCH COMPACTORS



GENERAL CONSTRUCTION EQUIPMENT

SKID STEER LOADERS



MODEL	POWER (HP)	RATED CAPACITY (LBS)	OPERATING WEIGHT (LBS)
226	56	1,500	5,822
232	56	1,900	6,737
236	71	1,950	7,007
242	56	2,100	6,914
252	71	2,500	7,861
246	73	2,150	7,381
262	82	2,700	7,968
272	90	3,250	8,292

WHEEL LOADERS/ INTEGRATED TOOLCARRIERS



MODEL	POWER (HP)	OPERATING WEIGHT (LBS)	BUCKET CAPACITY (YD³)
906	70	12,412	1.18
908	70	12,412	1.18
914	96	17,527	2.0
924	128	25,644	2.2-3.6
930	149	28,725	2.6-3.0
938	180	33,190	3.0-4.0
950	197	40,435	3.25-4.5
966	262	52,254	4.5-5.5
962	211	42,700	4.5
972	287	55,451	5.75
980	318	67,294	5.0-8.0

TELEHANDLERS



MODEL	POWER (HP)	OPERATING WEIGHT (LBS)	RATED CAPACITY (LBS)	LIFT HEIGHT (FT)
TH255	84	10,800	5,500	18
TH406	101	15,873	8,150	20
TH407	100	16,980	8,100	24
TH514	101	23,772	11,000	45
TL642	99	20,240	6,500	42
TL943	99	26,050	9,000	43
TL1055	125	34,700	10,000	55
TL1255	142	35,400	12,000	54

AERIAL WORK PLATFORMS



MODEL	WORKING HEIGHT (FT)	PLATFORM HEIGHT (FT)	LIFT CAPACITY (LBS)
S45	51	45	500
S65	51	65	500
Z45	51	45	500
Z60	36	60	500
S85	56.2	85	500
Aerial Work Platforms-Genie			
Boom Lifts			
(Straight stick and articulated from 40' to 80')			
(4 Wheel Drive Only)			
(Diesel Power)			

MULTI TERRAIN LOADERS



MODEL	POWER (HP)	RATED CAPACITY (LBS)	OPERATING WEIGHT (LBS)	GROUND PRESSURE (PSI)
257	56	2,500	7,952	4.5
287	82	3,854	9,874	3.9

PNEUMATIC ROLLERS



MODEL	POWER (HP)	OPERATING WEIGHT (LBS)	ROLLING WIDTH
CW14	100.5	28,528	68"
CW34	133	59,525	82"
PS150	100	28,535	69"
PS360	130	55,115	90"

TELEHANDLER WORK TOOLS

DESCRIPTION
WORK BASKETS (4' x 8', 10', 12')
GRAPPLE BUCKETS
MATERIAL BUCKETS
MATERIAL HANDLING ARMS



SCISSOR LIFTS

MODEL	WORKING HEIGHT (FT)	LIFT CAPACITY (LBS)	GRADEABILITY
GS1930	25	500	25%
GS2632	32	500	25%

COMPACT TRACK LOADERS



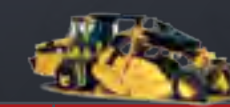
MODEL	POWER (HP)	RATED CAPACITY (LBS)	OPERATING WEIGHT (LBS)
239	65.8	2,050	7,289
259	71	2,950	8,934
279	73	3,050	9,865
289	73	3,650	10,332
299	95	4,250	10,898
299D XHP	106	4,550	11,647

ASPHALT ROLLERS



MODEL	POWER (HP)	OPERATING WEIGHT (LBS)	DRUM WIDTH
CB-24	33	5,952	47
CB-34	46	8,688	51
CB54 XW	137	26,230	79

ROAD RECLAIMERS/ SOIL STABILIZERS



MODEL	POWER (HP)	OPERATING WEIGHT (LBS)	ROTOR DRUM WIDTH (IN)
RM300	350	53,911	96
RM500	540	62,049	96

SKID STEER/MULTI TERRAIN LOADER WORK TOOLS



DESCRIPTION		
ANGLE BLADES	FORKS	TILLERS
ASPHALT PLANER	GRAPPLES	TRENCHERS
AUGERS	MOWER	TRENCH COMPACTORS
BREAKERS	MULCHER	TREE SHEARS
BROOMS	RAKES	
BUCKETS	STUMP GRINDERS	

COMPACTION ROLLERS



MODEL	POWER (HP)	OPERATING WEIGHT (LBS)	DRUM WIDTH
CS/CP34	74	11,000	50
CS/CP 44	100	16,832	66
CS/CP 56	156	25,885	84



EARTH MOVING MACHINES & ATTACHMENTS

GENERAL CONSTRUCTION EQUIPMENT

ROCK CRUSHERS



MODEL	FEATURES
RDS-15	<ul style="list-style-type: none"> High performance Four Bar Impactor with Three Stage Crushing Standard crusher discharge "ROCK BOX" with impact bed 40" x 14' Feeder with a 4' two-step self-cleaning grizzly On-board 5' x 14' double deck screen with reversible side transfer conveyors Large feed opening Cat powered PT Tech HPT012, Microprocessor Controlled Hydraulic Clutch that promotes less power loss and more efficient fuel consumption On-board power for full plant operations and 3 extra outlets for auxiliary conveyors Standard hydraulic self-leveling system
RDS-20	<ul style="list-style-type: none"> High performance Four Bar Impactor with Three Stage Crushing Standard crusher discharge "ROCK BOX" with impact bed Standard hydraulic apron adjustment 52" x 17' vibrating feeder with 5' two-step self relieving grizzly On-board 5' x 16' double deck screen with reversible side transfer conveyors Large feed opening Cat powered PT Tech HPT012, Microprocessor Controlled Hydraulic Clutch which promotes less power loss and more efficient fuel consumption On-board power for full plant operations and 3 extra outlets for auxiliary conveyors Standard hydraulic self-leveling system
MAG-20	<ul style="list-style-type: none"> The IROCK Magnum uses one power source to run a complete crushing operation plus three auxiliary outlets. The optional, patented Hydraset Hopper™ allows just one operator to attach and detach the hopper/feeder for transportation in minutes. Standard hydraulic outriggers help set up the machine in minutes. The optional in-line discharge belt features a heightened discharge point that reaches 10-feet 11-inches for higher stockpiling.
TC-20	<ul style="list-style-type: none"> A 15-cubic-yard fixed Hardox® hopper is paired with a 52-inch by 16-foot vibrating grizzly feeder with a larger impact crusher inlet for increased production rates. The TC-20's feeder is the longest among tracked crushers and allows operators to feed material with a large wheel loader. A 48-inch-wide discharge conveyor can stockpile up to a maximum height of 10 feet, 11 inches. Operators can hydraulically lower or raise the conveyor to feed stockpiling conveyors and make maintenance easier. The standard ROCK BOX reduces wear on the discharge point by forming crushed material into a natural rock shelf to serve as a liner. A standard wireless remote control offers standard full plant functions and two-speed tracking for easy maneuverability around a job site or onto a trailer.

Conveyor Options Available

SWEEPERS & BROOMS

DESCRIPTION	
Ride on Parking Lots or Highway	Mid Mount and Front Mount
8 ft. Broom	Cab A/C with Water Systems

TRAILERS



MAKE	MODEL	DESCRIPTION
Tow Master	T-12DT	16' Tilt Deck
Tow Master	T-14DT	18' Tilt Deck
Belshe	WB12-2EBP	12' Ram Trailer

SCREENING PLANTS



MODEL	TRANS. LENGTH (FT)	TRANS. WIDTH (FT)	TRANS. HEIGHT (FT)	WEIGHT (LBS)
TS512	51' 10"	9' 10"	10' 6"	59,535
TS516	51' 2"	9' 10"	11' 2"	77,175
TS522	61' 8"	9' 10"	11' 2"	82,026
TC20	57' 11 7/16"	11' 9"	12' 3"	93,480

Conveyor Options Available

CONVEYORS

DESCRIPTION	POWER (HP)	ENGINE TYPE
50' X 30' Portable Conveyor	10	Electric
60' X 30' Portable Conveyor	15	Electric
65' X 32' Portable Conveyor	15	Electric
80' X 30' Portable Conveyor	20	Electric
80' X 30' Portable Conveyor	80	Diesel
80' X 36' Portable Conveyor	80	Diesel

DOUBLE DRUM TRENCH ROLLERS



MODEL	POWER (HP)	OPERATING WEIGHT (LBS)	DYNAMIC (CENTRIFUGAL) FORCE	VIBRATION FREQUENCY
RTX-SC2	20.8	3,439	7,700/15,400 lb	2,600 vpm

WATER EQUIPMENT



DESCRIPTION	
Water Trucks	2,000 – 6,000 gallons
Water Wagons	5,000 gallons
Water Towers	12,000 gallons

TRENCHERS



MODEL	POWER (HP)	MAX TRENCH DEPTH (FT)	TRENCH WIDTH (IN)
RT40	42	5.25	6-12
RT95	99	7.10	6-24

* Also available with Backhoe and Rock Saw attachments.



RENTAL POWER

DIESEL GENERATORS



PRIME POWER	kVa	VOLTAGE	PHASE
7 kW	9 kVa	208 or 480 volts	1 phase / 3 phase
20 kW	25 kVa	208 or 480 volts	1 phase / 3 phase
25 kW	31 kVa	208 or 480 volts	1 phase / 3 phase
36 kW	45 kVa	208 or 480 volts	1 phase / 3 phase
45 kW	56 kVa	208 or 480 volts	1 phase / 3 phase
56 kW	70 kVa	208 or 480 volts	1 phase / 3 phase
60 kW	75 kVa	208 or 480 volts	1 phase / 3 phase
68 kW	85 kVa	208 or 480 volts	1 phase / 3 phase
80 kW	100 kVa	208 or 480 volts	1 phase / 3 phase
90 kW	113 kVa	208 or 480 volts	1 phase / 3 phase
100 kW	125 kVa	208 or 480 volts	1 phase / 3 phase
145 kW	181 kVa	208 or 480 volts	1 phase / 3 phase
150 kW	188 kVa	208 or 480 volts	1 phase / 3 phase
157 kW	196 kVa	208 or 480 volts	1 phase / 3 phase
182 kW	228 kVa	208 or 480 volts	1 phase / 3 phase
210 kW	263 kVa	208 or 480 volts	1 phase / 3 phase
230 kW	288 kVa	208 or 480 volts	1 phase / 3 phase
240 kW	300 kVa	208 or 480 volts	1 phase / 3 phase
275 kW	344 kVa	480 volts	3 phase
300 kW	375 kVa	208 or 480 volts	1 phase / 3 phase
320 kW	400 kVa	480 volts	3 phase
350 kW	438 kVa	208 or 480 volts	1 phase / 3 phase
365 kW	456 kVa	480 volts	3 phase
400 kW	500 kVa	208 or 480 volts	1 phase / 3 phase
545 kW	681 kVa	480 volts	3 phase
800 kW	1,000 kVa	480 volts	3 phase
1000 kW	1,250 kVa	480 volts	3 phase
1275 kW	1,594 kVa	480 volts	3 phase
1750 kW	2,188 kVa	480 volts	3 phase
2000 kW	2,500 kVa	480 volts	3 phase
545 kW	681 kVa	600 volts	3 phase
1350 kW	1,688 kVa	600 volts	3 phase

AIR COMPRESSORS



MODEL	CFM	PSI
185	185	100
300HH	300	200
375	375	100
375H	375	150
375HH	375	200
400XAVSAF	400	200
750H	750	150
900/1150	900/1150	350/500
900H	900	150
1000XRVSAF	1000	365
1150XHA	1150	350
1600HAF	1600	150
1800XASAF	1800	150



NATURAL GAS GENERATORS

kVA	PRIME POWER	VOLTAGE	PHASE
69	65 kW	480 volt	3 phase
125	95 kW	480 volt	3 phase
169	135 kW	480 volt	3 phase
174	139 kW	480 volt	3 phase
215	172 kW	480 volt	3 phase
353	282 kW	480 volt	3 phase
500	400 kW	480 volt	3 phase
2944	1475 kW	480 volt	3 phase

LIGHT TOWERS

DESCRIPTION
8 kW and 20 kW Wide Body
(4) 1000 Watt Lights, Diesel, Trailer Mounted (Tandem-Tow)
20 kW RV/Disaster Relief Package w/ 335 gal water tank and Auxiliary Fuel Tank (98 Gallon) with the Water Tank on the 20kW RV.

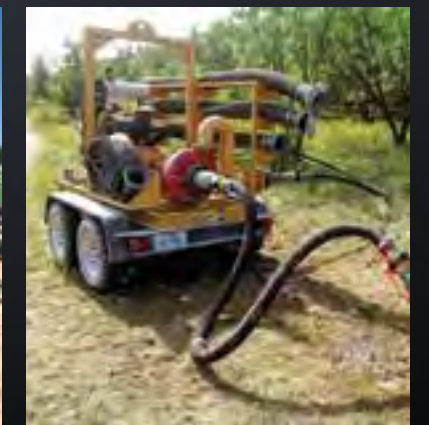
VACTRONS/VACUUM

MODEL	VACUUM	TANK
Vactron LP533XDT	580 cfm	500 gal



MAXI HEATERS/TEMP CONTROL

MODEL	AIR FLOW	HEATING CAPACITY
MH 1000	6,500 cfm	1,000,000 Btu/h



TRASH PUMPS

DESCRIPTION
4" 600 gpm
6" 1,000 gpm



Visit The Following Locations To View The Complete Line Of Rental Equipment.



866-2-WARREN
(866-292-7736)

ELK CITY, OK
1800 S Merritt Rd.

TULSA, OK
3601 N. Garnett Rd.

DALHART, TX
12006 US 87

ODESSA, TX
2331 E. Interstate 20

ENID, OK
5702 N. Hwy 81

ABILENE, TX
3601 S. Treadaway Blvd.

LUBBOCK, TX
702 Slaton Rd. East

SAN ANGELO, TX
5102 Link Rd.

OKLAHOMA CITY, OK
4501 W. Reno Ave.

AMARILLO, TX
1101 S. FM 1912

MIDLAND, TX
10000 E. Interstate 20

WICHITA FALLS, TX
1909 Old Jacksboro Hwy.



www.warrencat.com