

RENT IT HERE.



866.2WARREN | WARRENCAT.COM/RENTAL



WHY RENT WITH WARREN CAT?

EQUIPMENT | Our fleet is loaded with the newest, most reliable equipment in the industry. The fleet is rigorously maintained by trained Service Technicians prior to every rental so you receive productive and reliable equipment.

PEOPLE | Warren CAT employees are among the most experienced and knowledgeable in the industry. Have a question? We can answer it. Have a special request? Not a problem. With Warren CAT, you'll get more than great equipment; you'll get great advice and assistance.

FACILITIES | With full service locations across Oklahoma and Texas, we can provide fast, quality service with specially trained Cat® and allied product service technicians...your place or ours.

CAPABILITIES | Any piece of equipment, big or small, Warren is ready and waiting for you. We have you covered – regardless of your rental needs. Our large inventory and nationwide network means timesaving delivery of the equipment you need.

SITECH | Make smart decisions, decrease costly mistakes and increase efficiency with technology rental solutions from Trimble and Sitech.

RENT, RENT-TO-OWN, LEASE, FINANCE, PURCHASE | You can choose from a huge selection of well-maintained, top quality new and used name-brand equipment...with low hours and competitive prices...and we can put together a deal that works for you.

COMMITMENT | Some places claim to be the biggest, but when you consider all that Warren CAT has to offer...

- Locally owned and operated
- Legendary Caterpillar name and product support
- Best maintained fleet
- Largest dedicated inventory in Texas and Oklahoma
- On call 24/7

...plus, a sincere interest in your success, your bottom-line...you'll realize that we are the undisputed leader in rental services.

CONTENTS

4

Skid Steer Loaders
Compact Track &
Multi-Terrain Loaders

6

Hydraulic Excavators
Hydraulic Excavator
Hammers

8

Track-Type Tractors
Track-Type Loaders
Motor Graders

10

Telehandlers
Telehandler Work Tools

12

POWER RENTAL

14

Diesel Generators
Natural Gas Generators
Natural Gas Turbine
Generators

5

Skid Steer Loader Work
Tools

7

Articulated Trucks
Wheel Loaders &
Integrated Tool Carriers
Backhoe & Industrial
Loaders
Backhoe Loader Work
Tools

9

Scrapers
Road Reclaimers / Soil
Stabilizers
Asphalt Compactors
Vibratory Soil Compactors
Pneumatic Compactors

11

Trailers
Water Trucks, Wagons &
Towers
Screening Plants
Rock Crushers

13

POWER RENTAL

15

Heat/Temp Control
Pumps
Air Compressors
Allmand Light Towers



SKID STEER LOADERS

MODEL	HP	OPERATING WEIGHT	OPERATING CAPACITY	HYDRAULIC
226	67	5,849	1,550	Std. Flow
236	74	6,567	1,800	Std. Flow
242	74	7,138	2,200	Std. Flow
246	74	7,478	2,200	Std. / High
262	74	8,296	2,700	Std. / High
272	98	9,133	3,450	Std. / High

COMPACT TRACK & MULTI-TERRAIN LOADERS

CTL MODEL	HP	OPERATING WEIGHT	OPERATING CAPACITY	HYDRAULIC
239	67	7,434	2,185	Std. Flow
249	67	7,831	2,485	Std. Flow
259	74	8,987	2,870	Std. / High
279	74	10,095	3,170	Std. / High
289	74	10,688	4,130	Std. / High
299	98	11,464	4,970	Std. / High
299 XHPM	110	12,764	6,200	High Flow

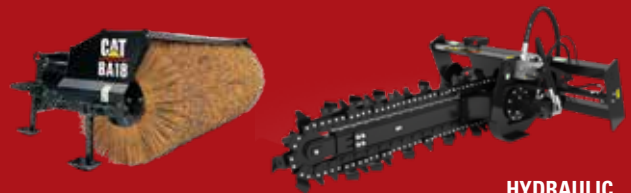
MTL MODEL	HP	OPERATING WEIGHT	OPERATING CAPACITY	HYDRAULIC
247	56	6,997	2,150	Std. Flow
257	74	8,094	2,570	Std. Flow





SKID STEER LOADER WORK TOOLS

MODEL	DESCRIPTION	HYDRAULIC REQ.
SSL BKT	Bucket, Edge or Teeth (60" 66" 72" 78" 84")	Std. Flow
SSL BKTROK	Multi-Purpose Bucket 78" 84"	Std. Flow
SSL BKTG	Grapple Bucket 72" 78"	Std. Flow
SSL FRK	Forks, 42" or 48"	Std. Flow
SSL SPEARR	Hay Spear Round Bale	Std. Flow
SSL SPEARS	Hay Spear Square Bale	Std. Flow
SSL FRKG72	Grapple Fork	Std. Flow
SSL RAKE-L	Landscape Rake	Std. Flow
SSL RAKE-P	Harley / Bradco Rake (elec w/t)	Std. Flow
SSL RAKEBR	Brush Rake	Std. Flow
SSL RAKG	Grapple Rake, 72" or 84"	Std. Flow
SSL AUGER	Auger, A19	Std. Flow
SSL BIT	Auger Bit 6-12" (Dirt)	Std. Flow
SSL BIT	Auger Bit 18-36" (Dirt)	Std. Flow
SSL BIT	Auger Bit 48" (Dirt)	Std. Flow
SSL BIT	Auger Bit 6-12" (Rock)	Std. Flow
SSL BIT	Auger Bit 18-24" (Rock)	Std. Flow
SSL EXT	Auger Bit Extension 12-24"	Std. Flow
SSL BLADE	Angle Blade	Std. Flow
SSL BLADE	6-Way Angle Blade	Std. Flow



MODEL	DESCRIPTION	HYDRAULIC REQ.
SSL ARM	Material Handling Arm	Std. Flow
SSL SODROL	Sod Roller 4"	Std. Flow
SSL GRUB	Grubber	Std. Flow
SSL TRENCH	Trencher (T6, T9, T15)	Std. Flow
SSL TILLER	Landscape Tiller	Std. Flow
SSL SHEAR	Tree Shear 14"	Std. Flow
SSL SHEAR	Metal Shear	Std. Flow
SSL MOWER	Mower	Std. High
SSL STUMP	Stump Grinder	High Flow
SSL POST	T-Post Driver	Std. Flow
SSL BROOMA	Angle Broom BA18	Std. Flow
SSL BROOMP	Pickup Broom BP18B	Std. Flow
SSL COMPAC	Vibratory Roller	Std. Flow
H55, H63, H65	Hammer (H55, H63, H65)	Std. Flow
SSL PLANER	Planer 14"	High Flow
SSL PLANER	Planer 18"	High Flow
SSL PLANER	Planer 24"	High Flow
SSL PLANER	Planer 39"	High Flow
SSL MULCH	Mulcher 65"	Std. High
SSL MULCHD	Disk Mulcher	Std. High
SSL MULCH	Mulcher 85"	High Flow

HYDRAULIC EXCAVATORS

MINI EXCAVATORS

MODEL	HP	OPERATING WEIGHT	DIG DEPTH (FT & IN)
300	13	2,061	5' 7"
301	19.2	4,063	8' 2"
302.7	20.7	6,239	8' 4"
303	23.5	7,204	9' 9"
303.5	23.5	8,209	10' 5"
304	40.2	8,996	11' 3"
305	40.2	11,433	12'
305.5	44.1	11,958	12' 6"
308	70.3	20,678	15' 3"

SMALL EXCAVATORS

MODEL	HP	OPERATING WEIGHT	DIG DEPTH (FT & IN)
312 / 313	92	33,080	19' 8"
314 / 315	97	37,794	19' 6"
316	117	39,029	20'
318	117	42,340	20'
320	162	50,265	22' 1"
323	162	56,200	22' 1"

MEDIUM EXCAVATORS

MODEL	HP	OPERATING WEIGHT	DIG DEPTH (FT & IN)
321 / 325	172	49,604	22'
324 / 326	201	57,309	22' 4"
328	204	76,500	22' 8"
329 / 330	273	68,100	23' 8"
329 / 330 Longreach	239	69,902	48' 5"
335	200	83,820	22' 11"
336	311	81,900	26' 11"
349	417	107,145	25' 2"

*Thumbs are available on all models.

HYDRAULIC EXCAVATOR HAMMERS

MODEL	HAMMER (FT-LB)
301-302 Hammer	400
303-305 Hammer	800
308 Hammer	1500
312 / 314 Hammer	3000
316 Hammer	3000
320 Hammer	3500
336 Hammer	6000
349 Hammer	12000



ARTICULATED TRUCKS

MODEL	HP	OPERATING WEIGHT	PAYLOAD CAPACITY (TONS)
730	370	52,690	31
740	474	75,825	43.5
745	504	73,553	45.2



WHEEL LOADERS & INTEGRATED TOOL CARRIERS

MODEL	HP	OPERATING WEIGHT	BUCKET RANGE CYD
903	42	9,414	.8 to 1.3
906	73	12,346	1.0 to 2.0
908	73	14,032	1.0 to 2.0
914	100	19,315	1.7 to 2.5
926	155	28,535	2.7 to 3.8
930	170	31,382	2.7 to 3.8
938	190	35,778	3.5 to 3.8
950	250	42,357	4.2 to 5.5
962	271	44,591	4.2 to 5.5
966	276	51,176	5.25 to 5.5
972	303	54,871	5.25 to 5.5
980	392	66,337	7 to 7.75



BACKHOE & INDUSTRIAL LOADERS

MODEL	HP	OPERATING WEIGHT	DIG DEPTH (FT & IN)
415 CE4	68	17,374	17' 11"
415 IL	68	14,035	Box Blade
416 CE4	88	17,970	17' 11"
416 AE4	88	18,430	17' 11"
420 CE4	93	19,640	17' 11"
420 AE4	93	20,092	17' 11"
420 AE4 IT	93	20,791	17' 11"
430 AE4	108	20,393	19' 6"
430 AE4 IT	108	21,092	19' 6"

* C=canopy; A=cab air; E=e-stick; 4=4wd; IT= integrated tool carrier; IL=industrial loader



BACKHOE LOADER WORK TOOLS

MODEL	DESCRIPTION
415/416/420 BKT	BUCKET 12 - 16" (ADD)
415/416/420 BKT	Bucket 18 - 30" (ADD)
415/416/420 BKT	BUCKET 36 - 60" (ADD)
416/420 FRK	BACKHOE FORKS 54"
416/420 FRK	FORKS (FLIP OVER) (ADD)
416/420 WHEEL	COMPACTION WHEEL (ADD)
416/420 HAMR	HAMMER (H90, H95) (ADD)





TRACK-TYPE TRACTORS

MODEL	HP	OPERATING WEIGHT
D3	80	17,465
D4	92	18,007
D5K	104	20,313
D6K	130	29,258
D6N	166	36,943
D6N VPAT	166	38,943
D6T	215	48,500
D6T VPAT	215	49,030
D6T XW VPAT	215	50,650

MODEL	HP	OPERATING WEIGHT
D6T LGPVPAT	215	51,875
D7	238	57,441
D8	354	87,600

TRACK-TYPE SIDE BOOM DOZERS

MODEL	HP	OPERATING WEIGHT	SIDE BOOM MODEL
D6K LGP SB	130	39,000	M550
D6N LGP SB	166	48,300	M540

TRACK-TYPE LOADERS

MODEL	HP	OPERATING WEIGHT	BUCKET RANGE CYD
963	193	44,771	3.7



MOTOR GRADERS

MODEL	HP	OPERATING WEIGHT
120M	145	39,892
120M AWD	153	41,859
12M	173	42,383
12M AWD	179	44,614
140M	193	43,683
140M AWD	202	45,652
160M AWD	213	43,464
14M	259	53,738



SCRAPERS

MODEL	HP	OPERATING WEIGHT	CYD CAPACITY
613	175	33,650	11
615	265	56,450	17
623	407	88,061	23



ROAD RECLAIMERS / SOIL STABILIZERS

MODEL	HP	OPERATING WEIGHT	ROTOR
RM500	540	62,611	16"

* Customer responsible for all wear items on machine during rental period.



ASPHALT COMPACTORS

MODEL	HP	OPERATING WEIGHT	DRUM WIDTH
CB24	36	6,003	47"
CB34	48	8,157	51"
CB8	100	18,783	67"
CB10	131	20,945	67"
CB64	137	26,852	79"
CB15	142	28,958	84"
CB66	142	29,057	84"



VIBRATORY SOIL COMPACTORS

MODEL	HP	OPERATING WEIGHT	DRUM WIDTH	CENTRIFUGAL FORCE (LBS)
CS/CP34	74	11,000	50"	15,000
CS/CP 44	100	16,471	66"	29,900
CS/CP54	131	24,539	84"	59,800
CS/CP 56	157	25,707	84"	67,600
CS/CP 56/CAB	157	25,707	84"	67,600



PNEUMATIC COMPACTORS

MODEL	HP	OPERATING WEIGHT	ROLLING WIDTH
CW16	100	11,464	68"
CW34	130	22,050	82"





TELEHANDLERS

MODEL	HP	OPERATING WEIGHT	RATED LIFT CAPACITY	LIFT HEIGHT (FT)
TH255	74	11,000	5,500	18' 4"
TH408	124	18,797	8,800	24' 9"
TL642	100	22,002	6,500	42'
JLG 8042	110	27,100	8,000	41' 11"
TL943	111	25,750	9,000	43'
TH514	100	23,722	11C000	45'
JLG 10054	110	28,200	10,000	53' 2"
TL1055	142	31,879	10,000	54' 9"
TL 1255	142	34,361	12,000	54' 6"
GENIE GTH1256	134	36,600	12,000	56"
JLG 1644	134	33,660	15,650	43' 7"



TELEHANDLER WORK TOOLS

MODEL	DESCRIPTION
TH HOOK	LIFTING HOOK
TH ARM	MATERIAL HANDLING ARM
TH BKT	MATERIAL HANDLING BUCKET
TH BKTG	GRAPPLE BUCKET



TRAILERS

MODEL	LENGTH	OPERATING CAPACITY	BALL HITCH DIAMETER
T-5DT Tilt Deck	14'	6,000	2 5/16"
T-12DT Tilt Deck	16'	12,000	2 5/16"
T-14DT Tilt Deck	16'	14,000	2 5/16"
T-14HD Dump	16'	14,000	2 5/16"



* 3/4 ton vehicle or larger required for trailer rental.

WATER TRUCKS, WAGONS & TOWERS

MODEL	TANK CAPACITY (GAL)	OPERATING WEIGHT	DESCRIPTION
WTR500	500	1,428	500 GAL Water Trailer
WT2000	2,000	26,000	Ford F750
WT4000	4,000	54,600	CAT 660S or PB
WT4500	4,500	-	CAT 660S
730WT	6,000	-	Niece Tank on CAT 730
Water Tower	12,000	22,000	Niece Water Tower



* See Rental Representative for On-Highway Truck Rental Requirements.

SCREENING PLANTS

MODEL	HP	OPERATING WEIGHT	DESCRIPTION
TS512	129	59,535	5' x 12' IRock Screening Plant
TS516	129	77,175	5' x 16' IRock Scalper / Screening Plant
TS520	129	82,026	5' x 20' IRock Screening Plant



ROCK CRUSHERS

MODEL	HP	OPERATING WEIGHT	DESCRIPTION	MISC.
TC-20		Call	IRock Brusher	Setup Required
WJC-2644		Call	IRock Crusher	Setup Required
TC-15CC	350	Call	IRock Crusher	Setup Required



RENTAL POV



VER



DIESEL GENERATORS

PRIME POWER	kVa	VOLTAGE	PHASE
6 kW	8	208 or 480 Volts	1 Phase/ 3 Phase
18 kW	23	208 or 480 Volts	1 Phase/ 3 Phase
20 kW	25	208 or 480 Volts	1 Phase/ 3 Phase
28 kW	35	208 or 480 Volts	1 Phase/ 3 Phase
36 kW	45	208 or 480 Volts	1 Phase/ 3 Phase
47.5 kW	60	208 or 480 Volts	1 Phase/ 3 Phase
51 kW	64	208 or 480 Volts	1 Phase/ 3 Phase
54 kW	68	208 or 480 Volts	1 Phase/ 3 Phase
56 kW	70	208 or 480 Volts	1 Phase/ 3 Phase
60 kW	75	208 or 480 Volts	1 Phase/ 3 Phase
70 kW	88	208 or 480 Volts	1 Phase/ 3 Phase
90 kW	113	208 or 480 Volts	1 Phase/ 3 Phase
100 kW	125	208 or 480 Volts	1 Phase/ 3 Phase
136 kW	170	208 or 480 Volts	1 Phase/ 3 Phase
145 kW	181	208 or 480 Volts	1 Phase/ 3 Phase
158 kW	198	208 or 480 Volts	1 Phase/ 3 Phase
176 kW	220	208 or 480 Volts	1 Phase/ 3 Phase
182 kW	228	208 or 480 Volts	1 Phase/ 3 Phase
200 kW	250	208 or 480 Volts	1 Phase/ 3 Phase
210 kW	263	208 or 480 Volts	1 Phase/ 3 Phase
240 kW	300	208 or 480 Volts	1 Phase/ 3 Phase
275 kW	344	208 or 480 Volts	1 Phase/ 3 Phase
320 kW	400	208 or 480 Volts	1 Phase/ 3 Phase
340 kW	425	208 or 480 Volts	1 Phase/ 3 Phase
365 kW	456	208 or 480 Volts	1 Phase/ 3 Phase



PRIME POWER	kVa	VOLTAGE	PHASE
455 kW	570	480 Volts	3 Phase
545 kW	681	480 Volts	3 Phase
725 kW	906	480 Volts	3 Phase
910 kW	1,138	480 Volts	3 Phase
1825 kW	2,281	480 Volts	3 Phase

NATURAL GAS GENERATORS

PRIME POWER	kVa	VOLTAGE	PHASE
135 kW	169	480 Volts	3 phase
139 kW	174	480 Volts	3 phase
172 kW	215	480 Volts	3 phase
282 kW	353	480 Volts	3 phase
400 kW	500	480 Volts	3 phase
1,475 kW	2,944	480 Volts	3 phase



NATURAL GAS TURBINE GENERATORS

MODEL	TYPE	PRIME POWER	kVa
C1000	Dual Mode	1000 kW	1250
XQ5200	Solar T60	5.2 MW	-
XQ5700	Solar T60	5.7 MW	-



HEAT / TEMP CONTROL

MODEL	CAPACITY	DESCRIPTION
AC 30-Ton	30 Ton	AC Unit
CHLR 200-T	200 Ton	Chiller Unit
MAC6000	3000 Feet	Glycol Heated Hose
SH-750	750,000 BTU	Flameless Heater
MFH900	865,000 BTU	Flameless Heater
MH500	1,000,000 BTU	Maxiheater



PUMPS

SIZE	TYPE
6 x 6	Dry Prime Pump Enclosed
8 x 6	Dry Prime Pump
10 x 8	Dry Prime Pump



AIR COMPRESSORS

MODEL	CFM	PSI
185	185	100
375	375	100
375H	375	150
375HH	375	200
400XAVSAF	400	58-200
400HH T4F	400	200
400XAVST4F	400	58-200
900H	900	150
1150XAST4F	950/1050/1150	200/150/100
HIGH PRESSURE		
900/1150	900/1150	500/350
1000XRVSFAF	1000/875	365/508
1550XRVS+	1550/1350	365/508



150 PSI		
1600HAF	1600	150
1600HAFT4F	1600	100 or 150
1800XASAF	1800	150
1800XAST4F	1400/1600/1800	200/150/100

ALLMAND LIGHT TOWERS

MODEL	kW RATING
LTA8WL	8 kW
LTA8NLV	8 kW
LTA8WV	8 kW
LTA8WVLED	8 kW
LTA8WV TDM	8 kW
LTA8WVGLB	8 kW
LTA15WV	15 kW
LTA15WVLED	15 kW
LTA20WV	20 kW
LTA20WVGLB	20 kW



RV PACKAGES	
LTA15WVRV	15 kW
LTA20WVRV	20 kW

RENTAL SOLUTIONS

AERIAL LIFTS

MODEL	MAX PLATFORM HEIGHT	MAX HORIZONTAL REACH	LIFT CAPACITY (LBS)	WEIGHT
GR-20	19'	-	350	2,451
MEC Micro	19'	-	500	2,860
GS1930	19'	-	500	2,702
1930ES	19'	-	500	2,710
GS2632	26'	-	500	4,413
GS3232	32'	-	500	5,185
GS3246	32'	-	700	5,211
GS4047	39'	-	550	7,185
4045R	40'	-	550	7,000
GS2669RT	26'	-	1500	7,295
GS3369RT	32' 8"	-	1000	7,895
Z30 / 20N RJ	29' 2"	20' 6"	500	14,220
Z34 / 22N	34' 6"	22' 3"	500	12,000
S45	45'	36' 8"	500	15,270
Z45	45' 6"	24' 9"	500	16,360
S65	65'	56' 2"	500	22,270
660SJ	65' 8"	57' 1"	550	25,341
Z60/37J FE	59' 7"	36' 7"	500	17,100
Z62 / 40	61' 11"	45' 5"	500	22,665
S85	85'	76' 6"	500	39,500
Z80 / 60J	78'	60'	500	37,500
TZ-50	49' 6"	29' 2"	500	4,400



*Certificate of 1 million dollar liability insurance coverage with Warren CAT listed as loss payee required.

DUMP TRUCKS (ON HIGHWAY)



MODEL	CAPACITY	DESCRIPTION
DUMPTRK 6	6 cyd	Cat or PB Dump Truck
DUMPTRK 14	14-16 cyd	Cat or PB Dump Truck

* See Rental Representative for On-Highway Truck Rental Requirements.

VACUUM & HYDRO EXCAVATION



MODEL	CAPACITY	DESCRIPTION
Vactron	500 Gal	LP573XDT Vacuum Trailer
Ditch Witch HX30	500 Gal	Hydro Vacuum Excavator

COMPACTION EQUIPMENT



MODEL	DESCRIPTION	WIDTH (IN)	OPERATING WEIGHT (LB)
BVP 18/45	Plate Compactor	17.7	201
BT65	Rammer Compactor	11	150
BMP8500 (Bomag)	Trench Roller	24	3,583
RTX-SC2 (Wacker)	Trench Roller	32	3,300

MINI SKID STEER



MODEL	DESCRIPTION	HP	OPERATING WEIGHT (LB)	POWER
Ditch Witch SK1050	Mini Skid Steer	37	3,435	Diesel

CONCRETE EQUIPMENT



MODEL	DESCRIPTION	CAPACITY (CU FT.)	HP	POWER
Mixer M	Mortar Mixer	7	4.8	Gasoline
Mixer C	Concrete Mixer	6	4.8	Gasoline
Buggy C	Concrete Buggy	16	11.7	Gasoline

TRENCHERS & ROCK SAWS



MODEL	HP	DIG DEPTH (IN)	DESCRIPTION / CUTTING WIDTH (IN)
C24X	22	36	Walk Behind 6"
RT45	42	52	Ride On 6" - 12"

* Also available with backhoe attachments.
 ** Customer responsible for all wear items on machine during rental period.

PUMPS

MODEL	DESCRIPTION	WEIGHT (LB)	GPM
MQ2 S PMP	2" Sub Pump	77	79
MQ2 PMP	2" Trash Pump	97	211
MQ4 PMP	4" Trash Pump	216	555
GT6013 PMP	6" Trash Pump	-	2250



LIGHT TOWERS



MODEL	DESCRIPTION	WEIGHT (LB)	HEIGHT (FT/IN)
LTA6LED	6 KW Light Tower	1,990	24' 6"

AIR COMPRESSORS



MODEL	CFM	PSI
185	185	100

GENERATORS / CABLE

MODEL	KW / WATTS	KVA	STD BY KW	STD BY KVA
MQ25	20	25	22	28
MQ45	36	45	40	50
MQ125	100	125	110	138



SWEEPERS & BROOMS



MODEL	DESCRIPTION	BROOM WIDTH	WATER SYSTEM
DT74K	Cab Sweeper	8	170 Gal

BREAKERS



MODEL	DESCRIPTION	WEIGHT (LB)	REQ. AIR
P60S BRKR	60 LB Breaker	73	76 cfm
P90S BRKR	90 LB Breaker	95	85 cfm

WELDERS



MODEL	DESCRIPTION	WEIGHT (LB)	AMP
WELDER	400A Towable Welder	1,024	400

* 50' Welding Leads Included in Price - Purchase Price for Lost or Damaged Units Apply

BRUSH CHIPPERS



MODEL	DESCRIPTION	WEIGHT (LB)	HP
Chipper	6" Brush Chipper	1,800	25

EASY ACCESS FROM ANYWHERE, ANYTIME WITH THE **CatRentalStore.com** CUSTOMER PORTAL

Using the CatRentalStore.com customer portal, information about all your rentals with your local dealer is at your fingertips. Available anytime, anywhere, from any device, you'll have a fast, easy way to get any rental information you need.



Accessible



Easy



Convenient



**Transfer Equipment
Between Jobsites**



**View Equipment
on Rent**



**View Contracts
and Invoices**



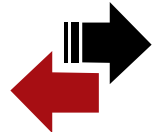
**Locate the
Nearest Branch**



**Request On-Site
Service**



**Search for
Equipment**



**Extend or
End Rentals**



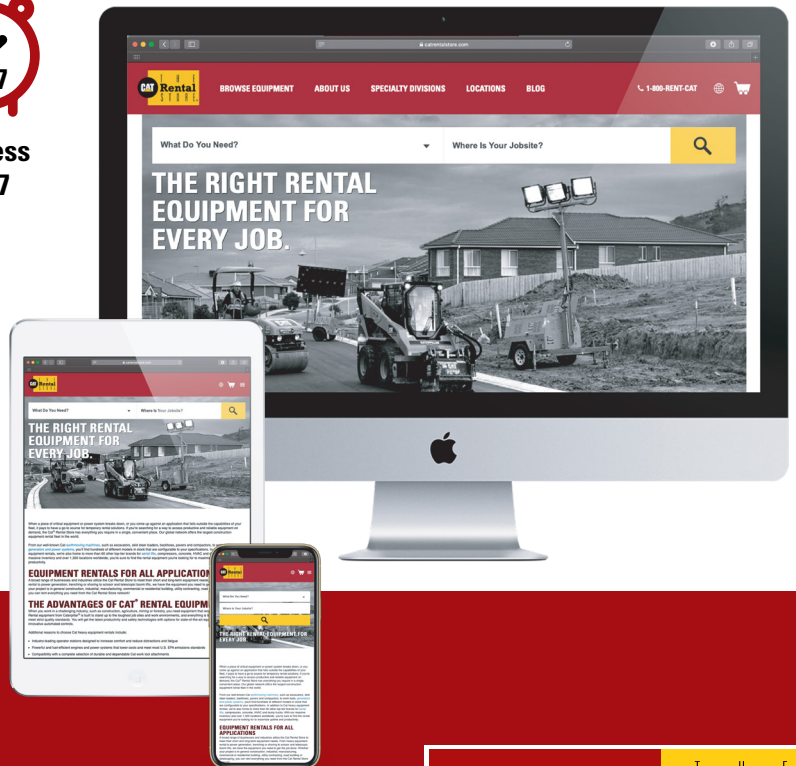
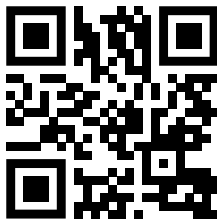
**Request
a Quote**



**View Rental
Rates**



**Access
24/7**



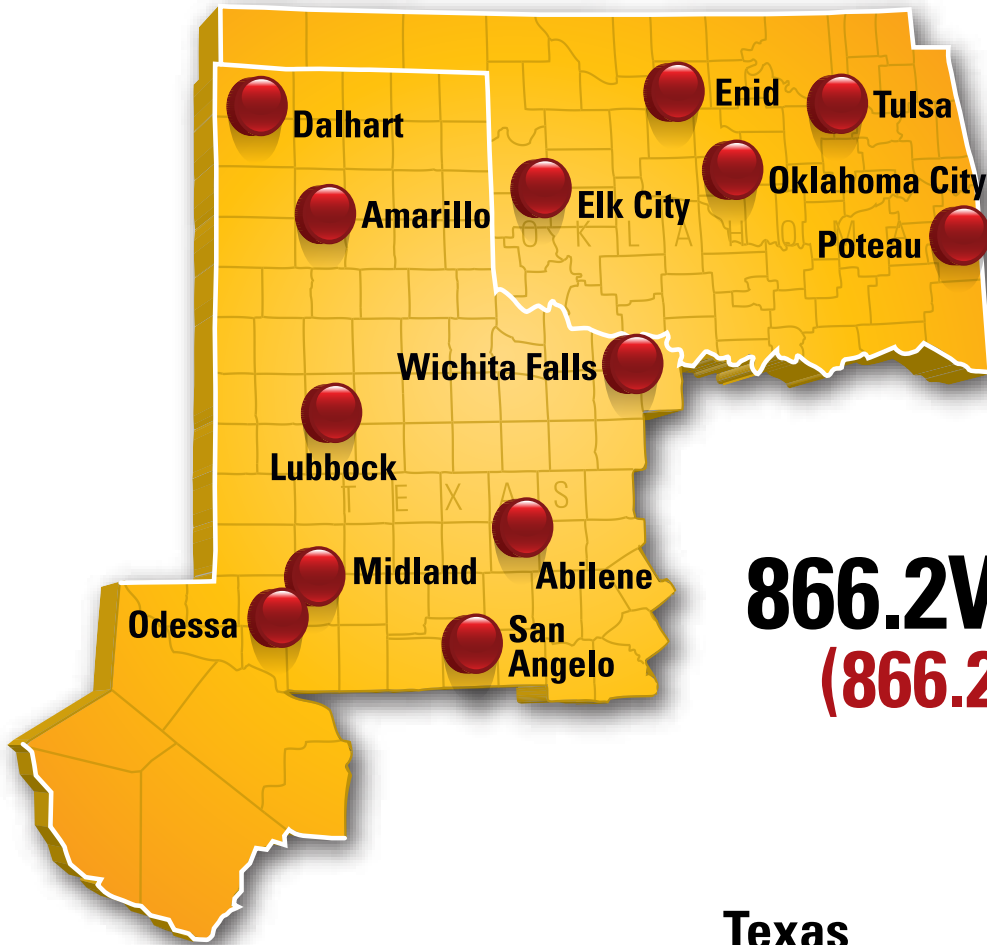
VISIT CatRentalStore.com

The CatRentalStore.com customer portal is available only at participating dealers. Contact your local dealer for more information.

© 2020 Caterpillar. All Rights Reserved. CAT, CATERPILLAR, LET'S DO THE WORK, their respective logos, "Caterpillar Yellow", the "Power Edge" and Cat "Modern Hex" trade dress as well as corporate and product identity used herein, are trademarks of Caterpillar and may not be used without permission.

WARREN  **Rental
STORE.**

Visit the Following Locations to View the Complete Line of Rental Equipment.



866.2WARREN
(866.292.7736)

Oklahoma

ELK CITY, OK*

1900 South Merritt Rd.

ENID, OK

5702 N. Hwy. 81

OKLAHOMA CITY, OK

15 N. Meridian Ave.

POTEAU, OK

1606 S. Broadway St.

TULSA, OK

3601 N. Garnett Rd.

TULSA, OK*

3641 S. Tacoma Ave.

Texas

ABILENE, TX

3601 S. Treadaway Blvd.

AMARILLO, TX

1101 S. FM 1912

DALHART, TX

12006 US 87

LUBBOCK, TX

702 Slaton Rd. East

MIDLAND, TX*

10000 W. Interstate 20

ODESSA, TX

2331 E. Interstate 20

SAN ANGELO, TX

1170 Loop 360 N.

WICHITA FALLS, TX

1909 Old Jacksboro Hwy.



www.warrencat.com/rental

*Represents Rental Power Locations.

© 2019 Caterpillar. All Rights Reserved. CAT, CATERPILLAR, LET'S DO THE WORK, their respective logos, "Caterpillar Yellow", the "Power Edge" and Cat "Modern Hex" trade dress as well as corporate and product identity used herein, are trademarks of Caterpillar and may not be used without permission. www.cat.com / www.caterpillar.com

® Registered trademarks of the respective companies.